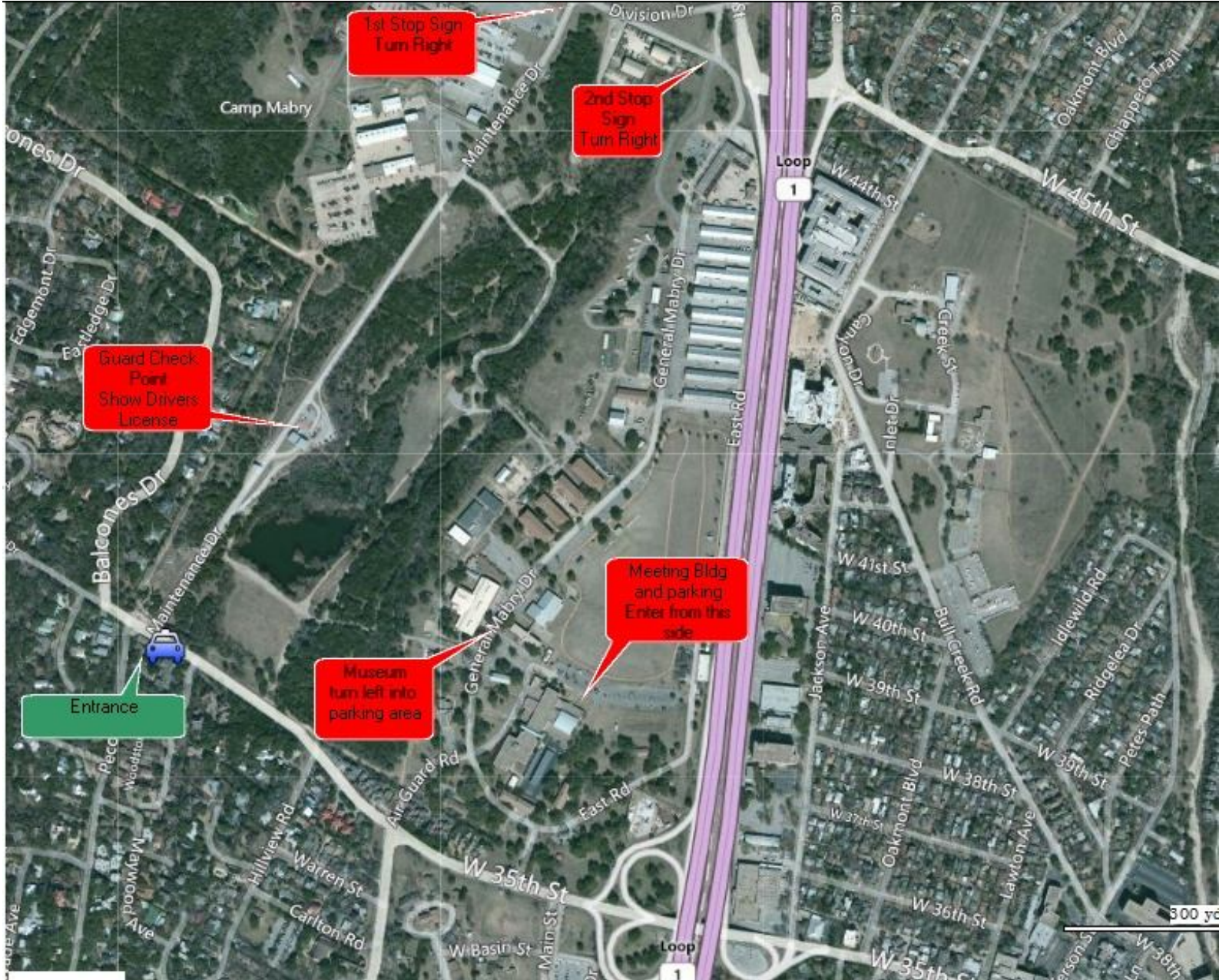


Austin Bead Society

Monthly Meeting Location as of 6/25/2012
Camp Mabry, 2200 W 35th Street, Austin, Tx



Directions from Mopac and 35th Street west

Travel west on 35th street .07 mile. The entrance will be on your right. Continue to the access point.

Everyone will have to clear the access point by showing a Photo ID or Driver's license. It's a good idea for the driver to have the vehicle registration in the car. The guards will be made aware of the meeting so just let them know you are there for the ABS meeting.

Follow Maintenance Dr. to the first stop. Turn right on to Division Drive. Continue to the 2nd stop sign at the bottom of the hill. Turn right onto Gen. Mabry Dr. Continue until you see the Museum on the right. The speed limit drops to 15mph in front of the Museum so you can't really miss it. Turn left into a parking lot. Continue through the parking lot to the meeting location. More parking is in front of the building. See the map above.

Here's a bird's eye view of the Museum and Meeting building.

